



Time series modelling: applications for groundwater control in urban tunnelling

Eivind Stein¹ · Jenny Langford¹ · Mats Kahlström¹

Received: 20 January 2023 / Accepted: 12 September 2023
© The Author(s) 2023

Abstract

Water ingress to tunnels may result in pore pressure drawdown and consolidation settlements in areas above tunnels founded on soft soil deposits, potentially causing damage to buildings and infrastructure. To limit pore pressure drawdown, requirements are set on water ingress to bedrock tunnels. To meet these requirements, pre-excavation grouting is often performed to reduce the hydraulic conductivity of the rock mass surrounding the tunnel. Real-time pore pressure monitoring may be used to document pore pressure drawdown during construction. However, the effect of tunnel water ingress can be difficult to distinguish from natural pore pressure fluctuations. This paper presents a tunnel case in Oslo, Norway, where time series modelling was applied to local pore pressure data using the transfer function model framework. The input to the models was daily meteorological data considering precipitation and evapotranspiration, and the output was simulated pore pressure levels with impulse response functions. The models were optimised with data from before tunnel excavation, and simulations were run during the tunnel excavation period. Simulated pore pressure levels were compared with observed pore pressure levels to assess tunnelling-induced drawdown. Model uncertainty ranges were used to produce upper, lower, and best estimates of the drawdown. The findings show that time series modelling with transfer function models may be used in tunnel projects to continuously assess the impact on the local groundwater environment, for better evaluation of the pre-grouting performance, and for quantifying both the temporary and long-term drawdown with increased accuracy.

Keywords Tunnelling · Groundwater · Pore pressure · Pre-grouting · Monitoring · Settlements · Time series modelling · Transfer function · Impulse response function

Introduction

Urbanisation calls for increasing development of underground infrastructure services, such as roads, railroads, subway, sewage systems, and electric power. In urban areas founded on soft soil deposits, water ingress to underground construction projects can cause pore pressure drawdown and consolidation settlements. This challenge is present in many regions around of the world, including Scandinavia, Canada, USA, Mexico, and Southeast Asia, where risk of settlements needs to be thoroughly addressed to mitigate damage to existing buildings and infrastructure. Extensive settlements in connection to groundwater lowering during underground construction have been documented by many

researchers (Olofsson 1994; Persson 1998; Karlsrud 2002; Yoo et al. 2012; Lopez-Fernandez et al. 2012; Garshol et al. 2012; Shen et al. 2014; Myrabø and Moss-Iversen 2014; Barton and Quadros 2019).

To mitigate settlements, pre-excavation grouting is performed to limit water ingress to hard rock tunnels. The process involves pumping a cement–water mixture with high pressure through drilled boreholes in front of the tunnel face to reduce the hydraulic conductivity of the rock mass (Gustafson and Stille 1996). If the pre-grouting is insufficient the water ingress will cause pore pressure drawdown in nearby aquifers. The pre-grouting efficiency is normally evaluated using various types of water ingress measurements performed in the tunnel. However, due to the uncertainties related to these measurements, new methods need to be explored to be able to assess the performance of the pre-grouting (Langford et al. 2022). This paper explores the potential of using real-time pore pressure data to assess the effects of tunnelling on pressure levels during construction.

✉ Eivind Stein
eivind.stein@ngi.no

¹ Norwegian Geotechnical Institute, Sandakerveien 140,
0484 Oslo, Norway

Monitored pore pressure drawdown in soil deposits overlying the tunnel could ideally be used to adjust the pre-grouting program as the tunnel progresses, to meet requirements on water ingress limits and to avoid settlements. However, pore pressure levels also fluctuate naturally, influenced by meteorological factors such as precipitation and evaporation. This makes it challenging to separate natural and un-natural fluctuations in pore pressure, and to assess the effects of tunnel excavation.

Time series analysis with transfer function models has been applied to simulate fluctuation of groundwater levels for different purposes (Hipel and McLeod 1994; Von Asmuth et al. 2002, 2008; Bakker et al. 2008; Von Asmuth 2012; Shapoori et al. 2015; Obergfell et al. 2019 among others). The use of transfer function models to simulate groundwater levels influenced by underground construction is less explored, limited to the recent work by Boström and Lindblom (2021). This paper further presents the use of transfer function models to simulate pore pressure levels during a recent tunnel project in Oslo, Norway. The aim is to demonstrate how the model simulations may be used in monitoring to assess the effect of the tunnel on the nearby groundwater levels during construction.

Project area and data

In Oslo, Norway, large parts of the city centre are built on man-made fill overlying deposits of soft, marine clay (Bjerrum 1967). The clay deposits in the project area have a thickness of

maximum 15 m. The underlying bedrock consists largely of Cambro-Silurian shale and limestone cut by Permian igneous dikes and sills. It is common to find a layer of moraine between the bedrock surface and the overlying clay. The soil deposits can be grouped into an upper aquifer in the topsoil (man-made fill material), and a lower aquifer in the moraine layer just above bedrock. The two aquifers are separated by the low permeable clay layer, acting as an aquitard. The natural pore pressure fluctuation is governed by factors such as amount of precipitation, evaporation, amount of surface run-off, snow melt, ground freezing, local topography, the presence of drainage systems, type of surface cover and soil type, etc. The lower aquifer is confined, and pore pressure levels are sensitive to discharge and recharge. Under these conditions, water ingress to tunnels and caverns in bedrock may lower the pore pressure in the confined aquifer. If the pore pressure reduction is sustained, a consolidation process will propagate in the clay, leading to ground settlements and potentially cause damage to buildings and structures (Karlsrud 2002). The magnitude of the settlements depends on the amount of pore pressure drawdown, the thickness of the clay layer, and the consolidation parameters of the clay deposit.

The project area, located in downtown Oslo, is schematically illustrated in Fig. 1. A bedrock tunnel was constructed, and pre-excitation grouting was performed continuously around the tunnel face ahead of excavation. Two piezometers, PZ1 and PZ2, were installed to monitor the pore pressures in the confined aquifer at the bedrock surface. Infiltration

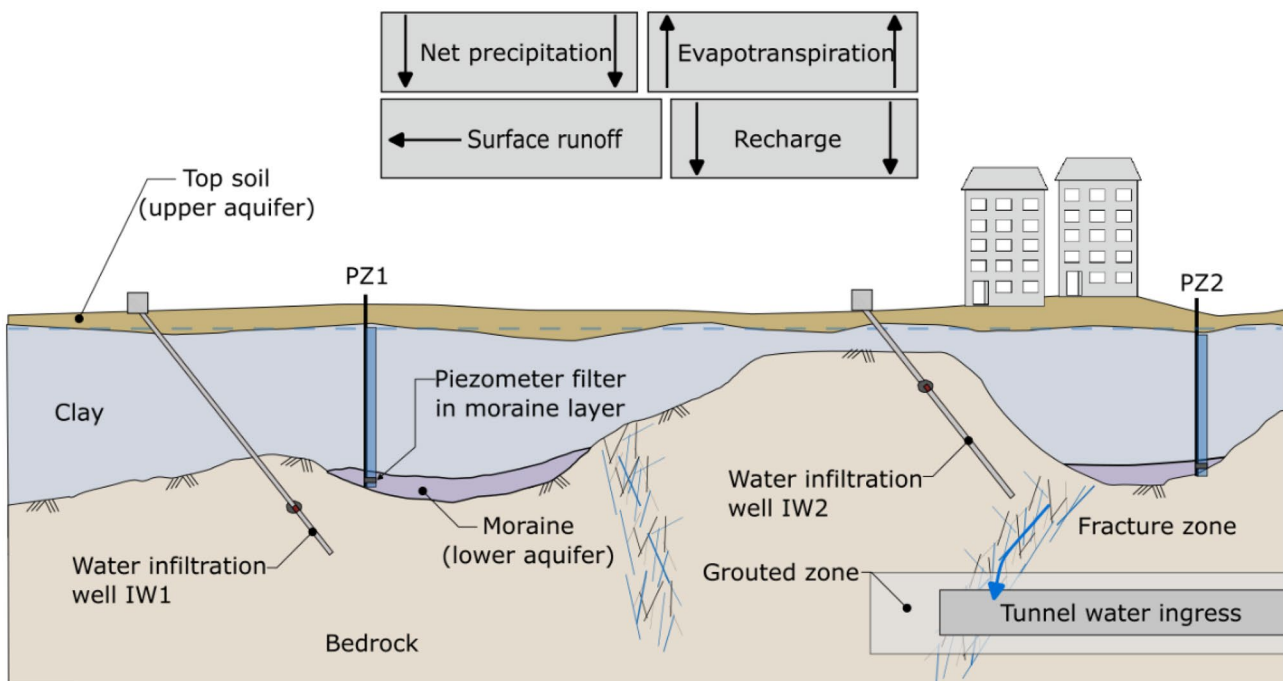


Fig. 1 Schematic illustration showing bedrock tunnelling with pre-grouting in typical Oslo ground conditions. Piezometers are installed in the lower, confined aquifer at bedrock level, and artificial infiltration is conducted in bedrock wells

wells IW1 and IW2 were installed into bedrock in settlement-sensitive areas to counteract water ingress to the tunnel. IW1 is installed close to the deep depression where PZ1 is located, and IW2 is installed in the vicinity of PZ2.

Tunnel excavation was started on January 1, 2020 and the whole project was finished around May 1, 2022. Pore pressures were monitored in PZ1 and PZ2 from the end of March 2017 until May 1, 2022 (Table 1). The piezometers were connected to remote sensing units, transferring pore pressure data in real time to a local server. The pore pressure data had hourly logging, but the data was resampled to daily average values. Piezometer PZ2 has some missing data in 2020, caused by instrument failure and replacement. The observed (measured) pore pressure time series are displayed in Fig. 2a, b; installation data is given in Table 1.

The pore pressure levels were assumed to be influenced by precipitation and evaporation. Meteorological data was retrieved from the closest meteorological station in Oslo, located about 3–4 km from the piezometers. The recorded precipitation is displayed in Fig. 2c. A snow storage model was implemented to correct for the effect of snowfall during the winter months. The model corrects for snowfall by storing measured precipitation during days with negative temperature, releasing the stored precipitation when the temperature eventually rises above 0°. The corrected precipitation (net precipitation) equals measured precipitation on days with positive temperatures plus release of stored precipitation (snow) as meltwater. Daily evaporation was estimated using the Penman–Monteith equation for reference evapotranspiration from grass-covered surfaces (Penman 1948). The calculations include daily air temperature, wind speed, relative humidity, air pressure, solar radiation, site elevation, site latitude, and day of the year; results are shown in Fig. 2d.

The tunnel construction was split into two different parts, sites A and B, where water ingress was measured separately at the two sites (Fig. 2e). Underground construction at site A was started in January 2020, while construction at site B was started in May 2021. For both sites, tunnel water ingress was measured at specific times, typically during holidays and on Sundays, as the ingress measurements require a period of no activity on site (no use of water on site). A continuous time series of water ingress from the two sites was obtained by interpolation between the individual measurements. There are uncertainties related to the measured amount of water ingress at both sites due to difficulties in performing measurements

consistently throughout the construction period. The measurements taken at site A are considered more uncertain than measurements taken at site B.

Water infiltration flux (litre/minute) was measured continuously in infiltration wells IW1 and IW2 (Fig. 2f, g). Infiltration well IW1 was installed in the beginning of 2020, while well IW2 was installed in 2021. Infiltration tests were conducted in 2020 and 2021, seen as short spikes in the data series. The infiltration flux was logged every hour, but the data was resampled to daily average values.

The pore pressure time series of 2020–2022 indicate natural seasonal pore pressure fluctuation of about 1 m in PZ1 and PZ2 prior to construction. It is also seen that the pore pressure in PZ1 responded well to the infiltration test in IW1 during March 2020. Data from PZ2 was not available at this time. A gradual decline in pore pressure was observed in PZ1 during spring 2020, when there was also an increase in water ingress rate from about 0 to 30 L/min at site A. The pore pressure decline coincided with a drought period in Oslo, and the cause of the pore pressure decline was thus uncertain. The water ingress rate at site A remained constant at 30 L/min during the rest of the project period. In spring of 2021, infiltration tests were conducted in wells IW1 and IW2. A clear response was seen in pore pressure levels of both PZ1 and PZ2. In August 2021, large amounts of water ingress were recorded at the site B tunnel. To counteract the drainage to the tunnel site, water infiltration was increased in both wells to compensate for pore pressure drawdown. During the rest of 2021 fluctuating pore pressure was seen in both PZ1 and PZ2 as water ingress and water infiltration proceeded simultaneously. In 2022, water ingress to A and B was reduced as a result of grouting efforts. Water infiltration was ended during the first 2 months of 2022. In May 2022, pore pressure levels at both PZ1 and PZ2 were about 1–1.5 m lower than levels recorded before start of tunnelling.

The transfer function model framework

Time series modelling and simulation of groundwater levels may be done using different methodologies, as described by Hipel and McLeod (1994). In this study, time series modelling of the pore pressure levels of the confined aquifer was done using a transfer-function modelling framework. The transfer-function model was first described by Box and Jenkins (1970), being a type of model that describes “*the dynamic relationship between two time series.*” In the case of hydrogeology, the time-dependent relationship between observed pore pressure and external stress series is used to make simulations.

A transfer function model may be described in the following way (Von Asmuth et al. 2002):

Table 1 Installation data for piezometers PZ1 and PZ2

Sensor	Time of installation	Terrain height	Installation depth
PZ1	March, 2017	8.7 m	11.6 m
PZ2	March, 2017	9.1 m	13.5 m

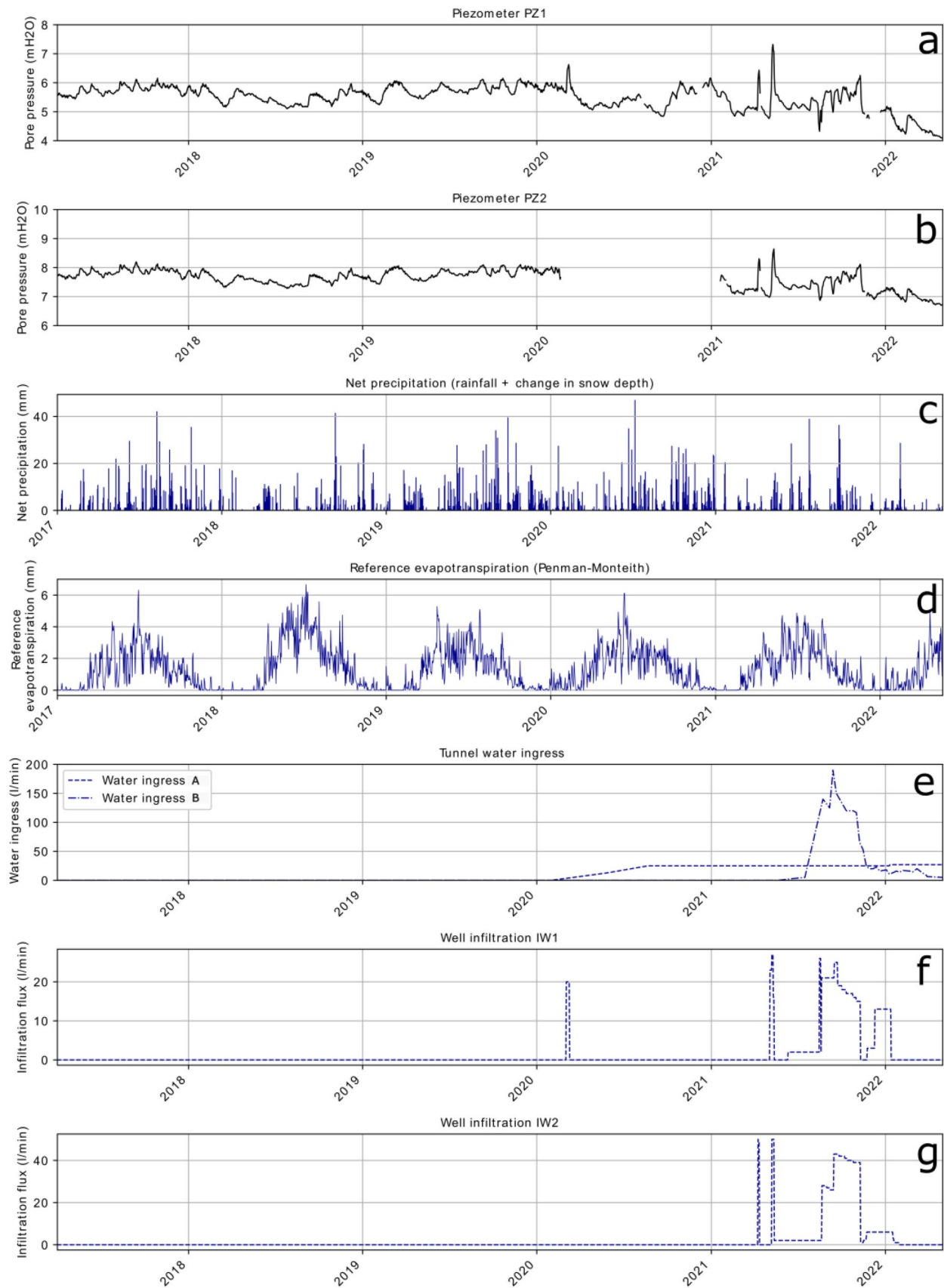


Fig. 2 Data used in the study. **a** Observed pore pressures PZ1, **b** observed pore pressures PZ2, **c** daily net precipitation, **d** reference evapotranspiration, **e** measured tunnel water ingress at site A and B, **f** water infiltration flux in well IW1, and **g** Water infiltration flux in well IW2

$$h(t) = \sum_{i=1}^N h_i(t) + d + r(t) \tag{1}$$

where in this study $h(t)$ is the observed pore pressure level at time t , N is the number of external stresses, $h_i(t)$ is the simulated pore pressure at time t based on input stress i , d is the base pore pressure level, and $r(t)$ is the model residual at time t . The model residual is the difference between observed and simulated values (the model error).

For continuous time series, the contribution of stress p on the pore pressure at time t , $h_p(t)$, is found by calculating the integral of the product of the stress time series $p(t)$ and the impulse response function for that specific stress, θ_p from 0 to time t (Von Asmuth et al. 2002):

$$h_p(t) = \int_0^t p(t)\theta_p(t - \tau)d\tau \tag{2}$$

When using natural aquifer recharge as input stress, recharge models are used to convert precipitation and evaporation into a single stress series. A linear recharge model was used in this study due to its simplicity and ease of interpretation. The linear recharge model assumes that the relationship between precipitation, evaporation, and aquifer recharge is linear. In this configuration, the daily (natural) aquifer recharge rch is calculated as precipitation p minus evaporation e , where the evaporation is multiplied by an evaporation factor f (Von Asmuth et al. 2008; Collenteur et al. 2019):

$$rch(t) = p(t) - fe(t) \tag{3}$$

The impulse response function θ_p describes the time-response of pore pressure to an external stress. For the purpose of this study, the time-response of pore pressure from natural recharge was simulated with an exponential function. The exponential function is suitable for systems where response to an impulse is near instantaneous. The shape of the exponential function is determined by two parameters, A and a :

$$\theta(t) = \frac{A}{a} e^{-\frac{t}{a}} \tag{4}$$

Autocorrelation of the model residuals is a common challenge related to time series modelling and can make it problematic to assess uncertainty and make statistical inference (Bakker and Schaars 2019). A noise model may be used on the residual time series to overcome this challenge, converting the model residuals into a series which more closely resembles white noise. Adding a noise model

was abandoned in this study due to inconsistency in model calibration and parameter optimisation. The effect may be caused by the high frequency of the data (daily values), combined with a relatively short time span of the data, but the actual cause of the inconsistency is still unclear.

The time series models were fitted to observed pore pressure time series using a nonlinear least squares solver from *SciPy* (Virtanen et al. 2020). The least squares solver optimises the model parameters to minimise the cost function. The cost function, in our case, is the sum of squared residuals from the calibration dataset. The open-source python package *Pastas* was used as the modelling framework. The background and basis of the *Pastas* package are described in Collenteur et al. (2019).

Results

A time series model was generated with natural recharge as a single input stress series. The model was calibrated on PZ1 and PZ2 data in the period before tunnelling (2017–2019). The optimised model parameters were used to make simulations of natural, undisturbed pore pressure levels during the following 2 years of tunnelling (2020–2022).

Simulating natural pore pressure levels

A time series model, from now on called the “basic” model, was calibrated to observed data from PZ1 and PZ2 from piezometer installation to the start of tunnel construction (2017–2019). The modelled and observed pore pressures for PZ1 and PZ2 are shown in Fig. 3.

The coefficient of determination (R^2) and root mean square error (RMSE) of the model fit are 0.79 and 0.11 for PZ1, and 0.79 and 0.09 for PZ2 (Table 2). The results are reasonably good; however, the models overestimate and underestimate the pressure levels during the most prevalent peaks and troughs. The lowest troughs might be caused by freezing of the upper soil layers during the coldest winter months. The underestimation during peak periods may be caused by large spatial variations during heavy rainfall and/or snow melting events, being a cause for potential large discrepancy between measured precipitation at the meteorological station compared to actual rainfall at the site of the piezometers.

The block and step response curves of the recharge stress for the two models are shown in Fig. 4. The block response curve describes the time-response of the pore pressure from an infiltration impulse of 1 (the impulse response function). The step response curve describes the time-response of the pore pressure from a continuous recharge input of 1. We can see that the block responses for the two piezometers are very similar, both in amplitude

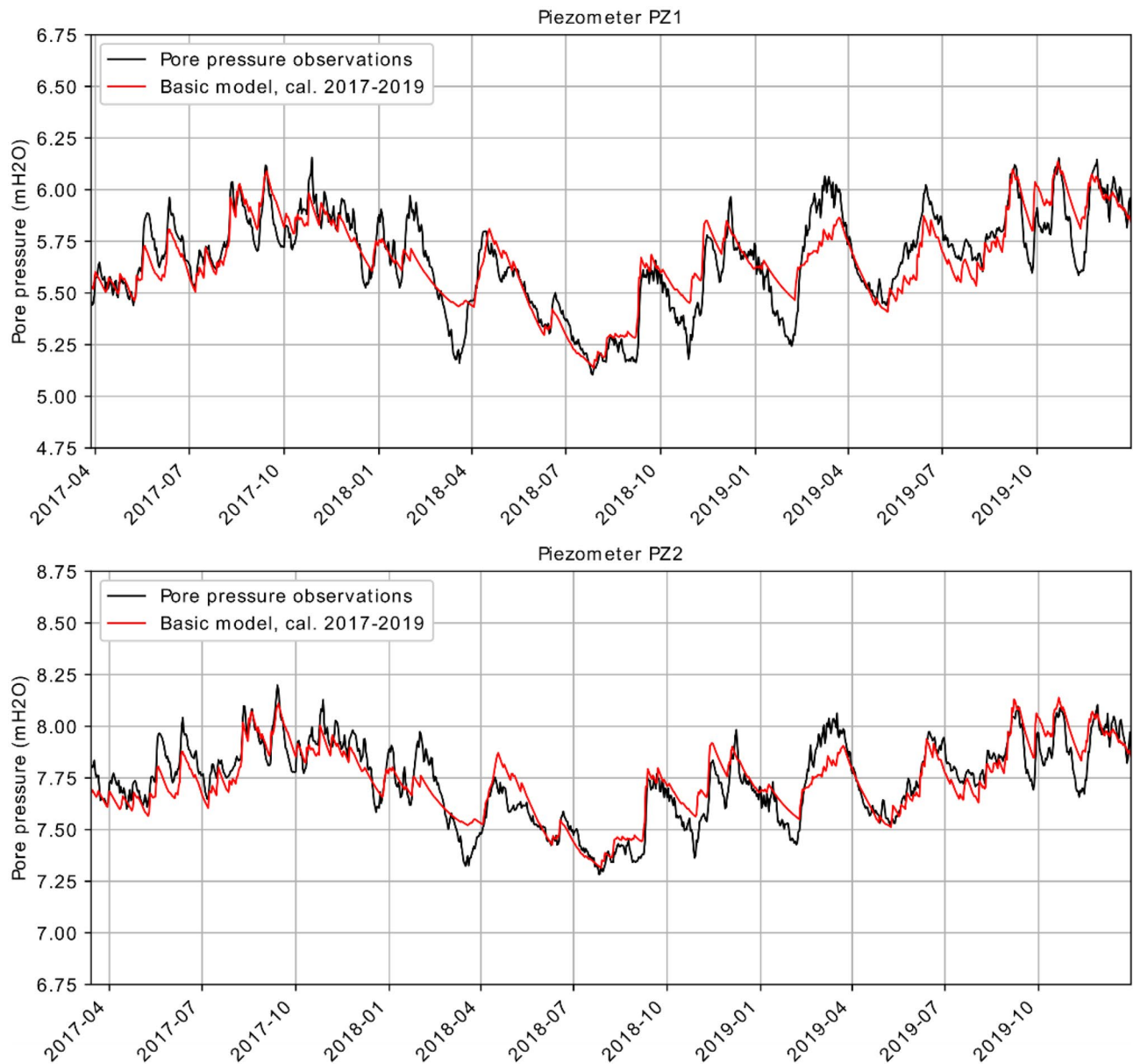


Fig. 3 Pore pressure observations (black) and modelled pore pressure (red) calibrated on data from PZ1 (top) and PZ2 (bottom) before January 1, 2020

and shape. This indicates that the pore pressure response and decline after recharge events are similar in the two locations. The step response is, however, different for the two piezometers. The impact of continuous recharge is higher for piezometer PZ1 than for PZ2, indicating that the pore pressure of PZ1 might be more sensitive to changes in long-term recharge rates than at PZ2.

The basic models contain four optimised parameters, the A and a parameter of the exponential impulse response function, the evaporation factor f , and the base level d . The parameter optimal values and standard errors from the least-squared optimisation are shown in Tables 3 and 4. The standard errors of the optimised parameters are low (<5%), indicating that the fitted values are reasonably consistent throughout the calibration period. The base level values (d) are in line with the observed values of PZ1 and PZ2 and considered reasonable.

Table 2 Goodness-of-fit metrics for the models calibrated on data from 2017 to 2019

Model	R^2	RMSE
PZ1 basic	0.79	0.11
PZ2 basic	0.79	0.09

Identifying tunnelling-induced drawdown

The optimised parameters of the calibration period were used together with daily measured meteorological parameters to

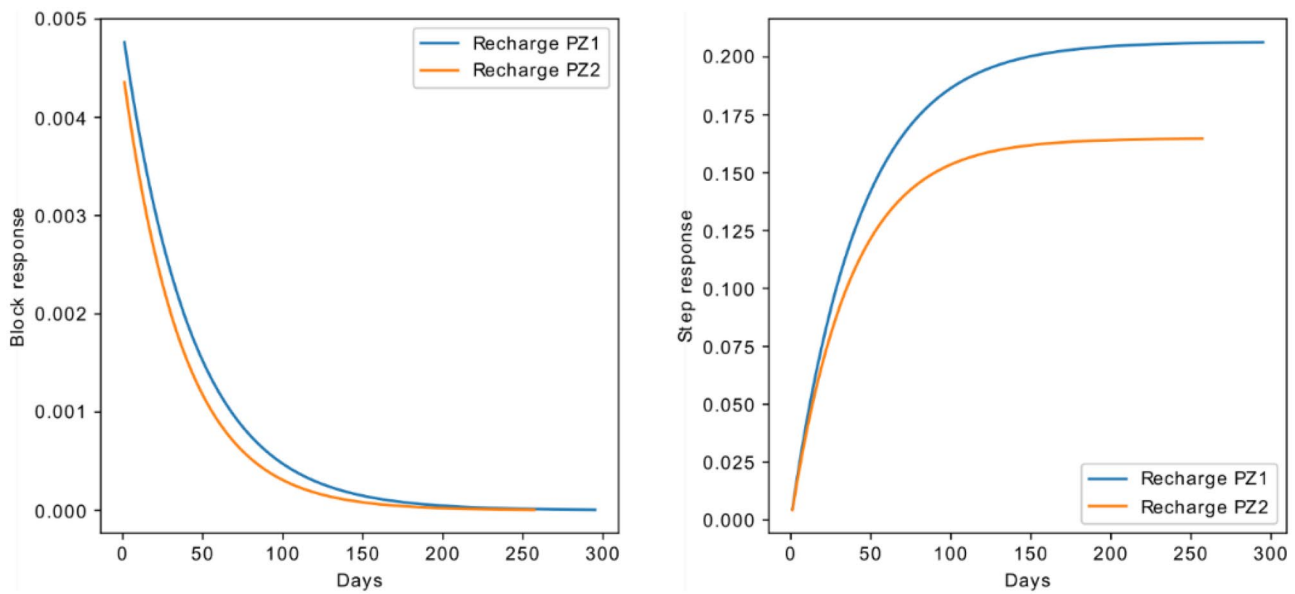


Fig. 4 Block and step response curves from recharge for the piezometers PZ1 and PZ2

generate simulations of pore pressure during the tunnelling period of 2020–2022. The results are seen in Figs. 5 and 6, with a vertical black dotted line indicating start of the tunnelling period.

The simulated pore pressures of 2020–2022 are based on calibration on data before the tunnelling period. Assuming that the observed pore pressure behaves naturally, the simulated levels of 2020–2022 are estimations of natural pore pressure that would have occurred without any influence from the nearby tunnel project. Based on these assumptions, the difference between the observed pore pressure and the simulated pore pressure is a direct estimate of artificial pore pressure drawdown during the tunnelling period.

As seen in Fig. 5, the difference between observed and simulated pore pressure for PZ1 increases during spring–summer 2020, and then decrease somewhat during the last half of 2020. Heavy water ingress combined with increased water infiltration causes a somewhat chaotic picture for PZ1 and PZ2 in 2021 (Figs. 5 and 6). However, as water infiltration is shut off during winter 2022, the difference between the time series increases to maximum levels

towards the end of the project period. The estimated tunnel-induced drawdown in May, 2022 amounts to approximately 1 m for PZ1 and 0.65 m for PZ2. However, this is just a snapshot from May, 2022, and the final, permanent drawdown may be calculated as the average difference between simulations and observations over the following years.

Visualising uncertainty

The model simulations might be run together with the observed time series for direct estimations of both temporary and permanent drawdown. However, the method does not describe uncertainty in the estimations or the model fit. Results from the calibration period show that the time series models sometimes over- and underestimate the pore pressure levels throughout the 2-year calibration period. The following methodology is proposed to visualise this uncertainty.

In Fig. 7, the basic model output was plotted against the pore pressure observations of the calibration period of 2017–2019 for PZ1 and PZ2. The scatter is an indication of model uncertainty during the calibration period. Upper and

Table 3 Optimised model parameters with standard errors for PZ1 basic model

Parameter	Optimal	Standard error
Recharge <i>A</i>	0.20	± 1.85%
Recharge <i>a</i>	42.85	± 2.87%
Evaporation factor <i>f</i>	−0.41	± 3.61%
Base level <i>d</i>	5.27	± 0.19%

Table 4 Optimised model parameters with standard errors for PZ2 basic model

Parameter	Optimal	Standard error
Recharge <i>A</i>	0.16	1.88%
Recharge <i>a</i>	37.33	2.96%
Evaporation factor <i>f</i>	−0.36	4.28%
Base level <i>d</i>	7.41	0.11%

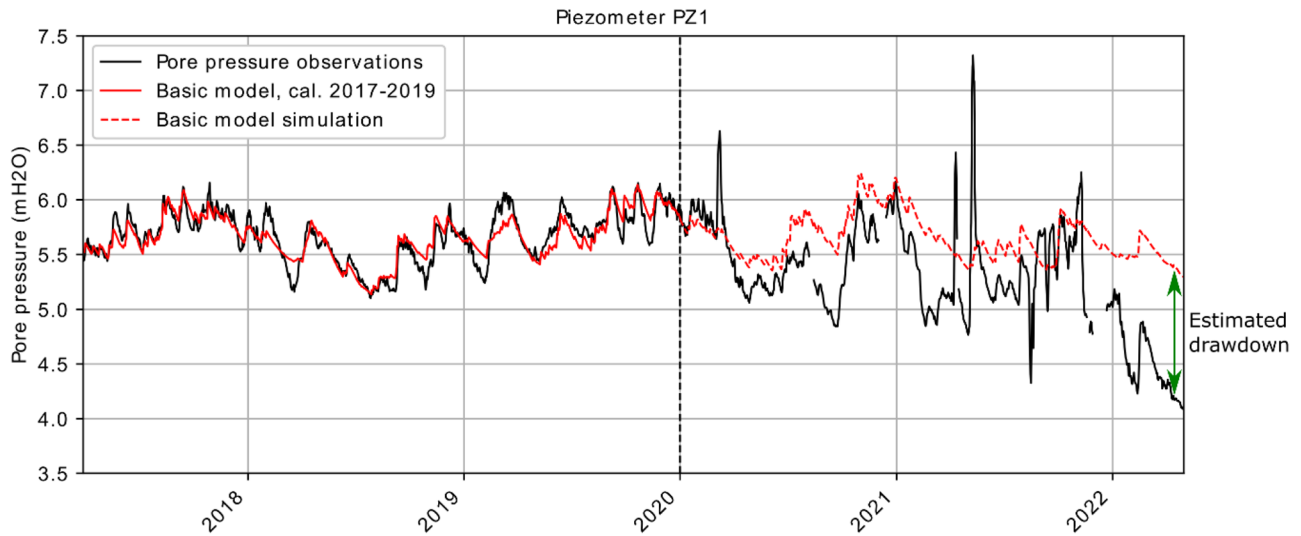


Fig. 5 Top: PZ1 basic model output. Observations shown with a black line. Model simulations shown with a red dotted line. Black vertical line marks start of the tunnelling period

lower bounds were set based on the assumption of linearity. The upper and lower bounds were added to the model simulations of 2020–2022 (Fig. 8). The uncertainty ranges for the PZ1 and PZ2 model simulations is ± 0.28 m and ± 0.20 m, respectively. The plot may be used directly for increased control during pore pressure monitoring, as observations falling outside the grey area point to un-natural levels not previously seen in the calibration period (assuming a generalised model, not overfit to the calibration dataset).

Figure 9 shows a more detailed view of observed and simulated pore pressure of PZ1 in 2020. During spring–summer

of 2020, the observed pore pressure fell after an initial test of infiltration well IW1. This also coincided with a period of drought in Oslo, and a decrease in pore pressure was thus expected. However, as seen in Fig. 9, the observed decline was larger than the simulated pore pressure decline, the difference increased through April. The observed pore pressure continued to fall, eventually reaching levels below the uncertainty range of the model simulations. This would have been a clear indication that the pore pressure decline was caused by increased tunnel water ingress. A pore pressure drawdown like that of March–May of 2020 is difficult

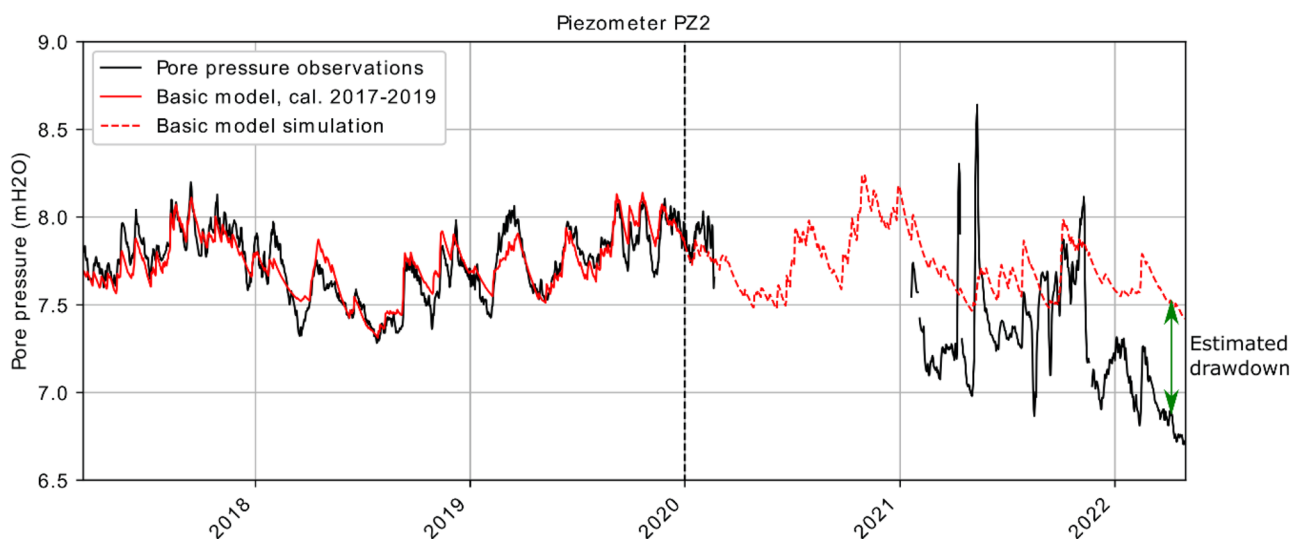


Fig. 6 Top: PZ2 basic model output. Observations shown with a solid black line. Model simulations shown with a red dotted line. Black vertical line marks start of the tunnelling period

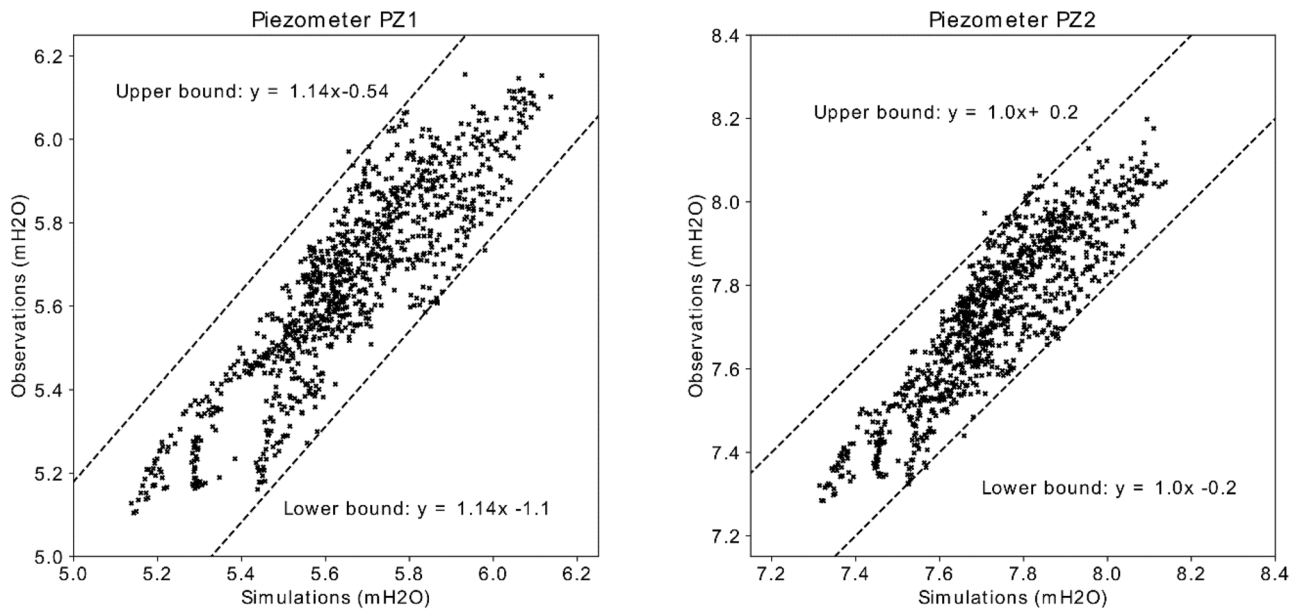


Fig. 7 Basic model output vs. pore pressure observations during the calibration period of 2017–2019

to discover just by visually monitoring the pore pressure time series. This example demonstrates how model simulations may be used by engineers on site for early detection of drawdown. Early identification of drawdown is useful, as the pre-grouting design may be adjusted to match the current geological conditions. Hypothetically, the total pore pressure drawdown at the end of the project may have been reduced if appropriate adjustments to the pre-grouting program had been done in time during March–May 2020.

Comparing pore pressure observations and model simulations may also be used to estimate the impact on the nearby groundwater environment. Upper, lower, and best estimates of tunnelling-induced drawdown may be calculated by taking the difference between observed pore pressure and the upper, lower, and best estimates of the simulated pore pressure (uncertainty range, Fig. 9). These metrics may be used for daily monitoring purposes during the construction phase to identify drawdown. Alarm thresholds could be set on these metrics to signal the need for intervention and pre-grouting adjustment. If the pore pressure monitoring and model simulations are extended beyond the end of the project period, upper, lower, and best estimates of permanent tunnelling drawdown may be calculated following the same methodology.

Discussion

As demonstrated, time series modelling with transfer function models may be used as a tool in urban tunnel projects to separate natural and un-natural pore pressure fluctuation,

enabling increased accuracy when quantifying temporary and long-term drawdown.

The transfer function modelling framework is favourable in this use case due to its simplicity and physical basis. The framework is not a black box, as the mathematical model is based on known physical relationships. Additionally, the limited number of parameters compared to other model types (i.e. neural networks) makes it less susceptible to overfitting. The length and quality of the input data impact the overall quality and reliability of the results. In a typical tunnelling project in Norway, the piezometers are installed 1–3 years prior to start of the tunnel construction period. The amount of data is thus often limited. Overfitting is likely if the length of the calibration period is short. The risk of overfitting must be evaluated in each case. In this study, the results from the fitted models (number of model parameters, low variance in optimised values) indicate well-generalised models. Longer data series are, however, still preferred.

When applying time series modelling on data from real projects, the main “drivers”, i.e. the main input stresses must be included in the model. If not, the model will not be able to successfully simulate the system, resulting in a bad model fit. A bad fit might also be caused by a complex relationship between pore pressure levels and the external stresses, not being suitable for implementation into the proposed model setup. In some areas, the dynamics between measured precipitation, evaporation, and aquifer recharge is not well described with a linear recharge model. In this case, more complex nonlinear recharge models might be needed to adequately simulate aquifer recharge (Peterson and Western 2014).

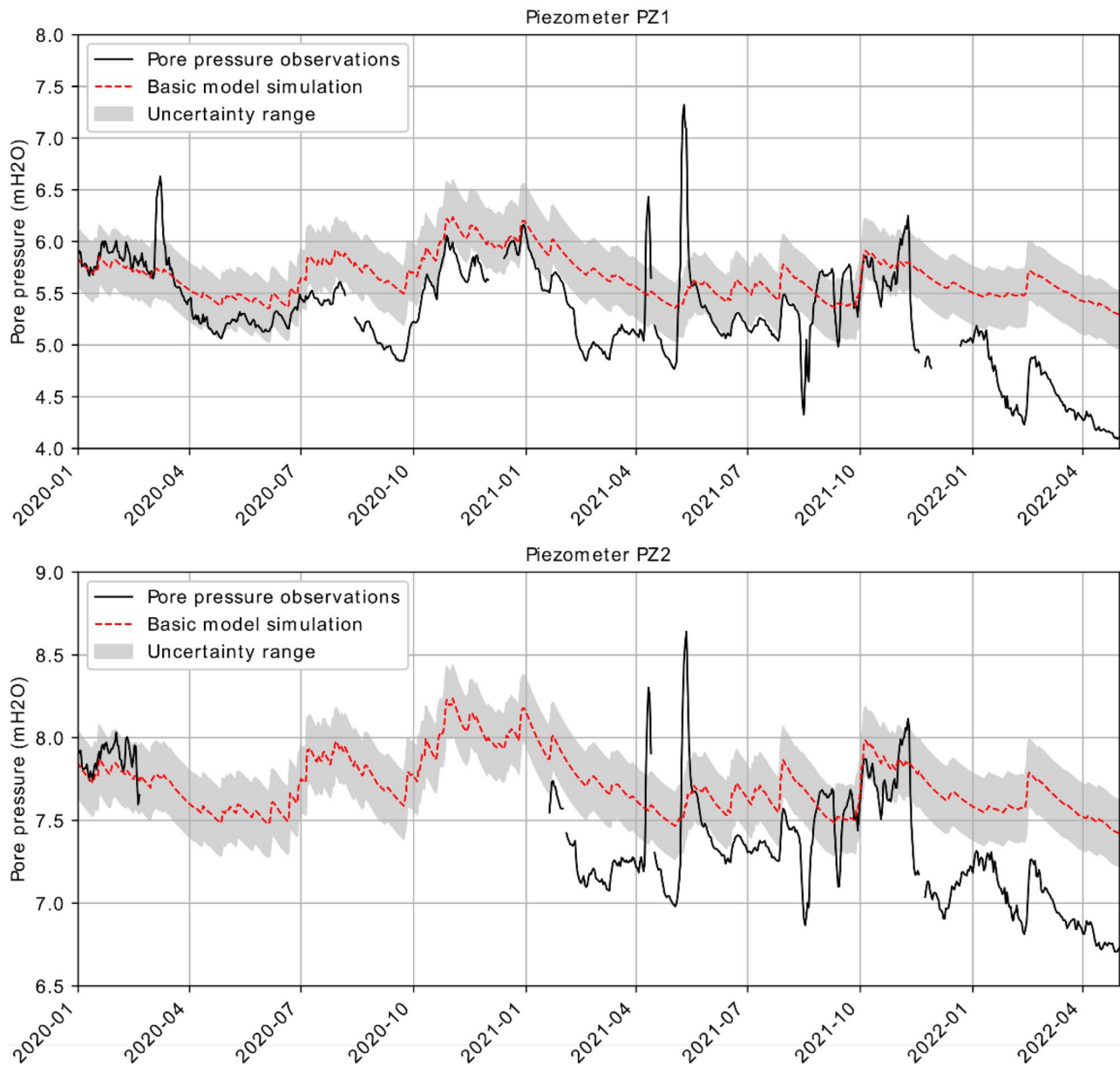


Fig. 8 Basic model simulations during the tunnel period of 2020–2022 with uncertainty range in grey

The time series models may be expanded to include data such as water ingress measurements and water infiltration rates. Simulations of pore pressure response from different combinations of water ingress and water infiltration may be done after an initial calibration, as demonstrated by Boström and Lindblom (2021). Additionally, the pore pressure response to climatic changes may be explored by adjusting meteorological input levels, for instance increasing or decreasing the amount of rainfall or temperatures over a given period. Such simulations come with its own uncertainties; however, the possibilities should be explored further.

Time series modelling with transfer function models may be used for other purposes than demonstrated here, including

estimation of annual aquifer recharge rates (Oberghell 2019; Collenteur et al. 2021), extension of piezometer data series by model simulation (forward or backwards), filling missing data, to name a few. Time series modelling might also be useful in combination with well infiltration and pumping tests. It might be possible to use observed data during well testing to make simulations of pore pressure drawdown in an aquifer during tunnel design. From outside the world of tunnelling, using transfer function models may also prove useful in the field of geohazards, using high frequency forecasts of pore pressure levels in early warning systems of landslide hazard, or in the field of engineering for simulations of groundwater levels as input to geotechnical design. These concepts should be explored further.

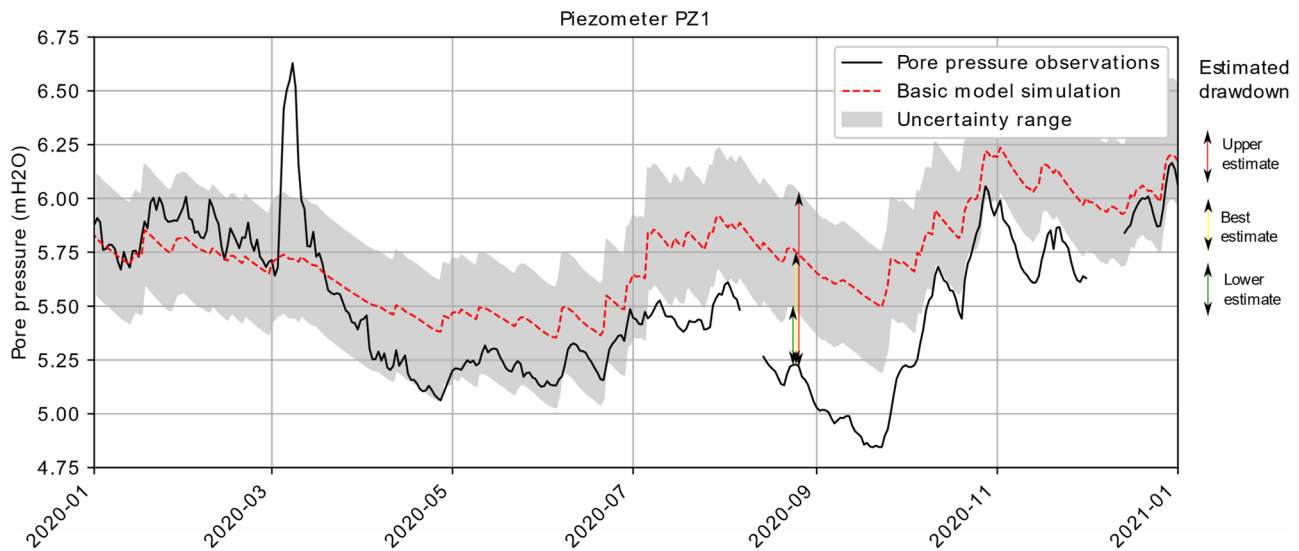


Fig. 9 Observed pore pressure and model simulations of PZ1 during 2020. The upper, best, and lower estimates of tunnel induced drawdown are shown with red, yellow, and green arrows

Conclusions

This study has demonstrated the use of time series modelling to simulate pore pressure levels during a tunnelling project in Oslo, Norway. Simulations were done using meteorological data as input to a transfer function model framework. Observed and simulated pore pressure levels were compared for early identification and quantification of drawdown caused by tunnel water ingress. The methodology may be useful in day-to-day tunnel monitoring, enabling quick adjustments to the pre-grouting program on site, or to increase the precision in assessing temporary and permanent tunnelling-induced drawdown. This study provides a basic proof of concept and basis for further testing of the methodology in future projects.

Acknowledgements The authors would like to thank the team working at the tunnel case project for providing valuable data and information for this study. The authors would also like to acknowledge the work of researchers at TU Delft and TU Graz for developing a free, open-source, and very useful tool for groundwater time series modelling.

Funding Open access funding provided by Norwegian Geotechnical Institute

Data availability Some or all data, models, or code generated or used during the study are proprietary or confidential in nature and may only be provided with restrictions.

Open Access This article is licensed under a Creative Commons Attribution 4.0 International License, which permits use, sharing, adaptation, distribution and reproduction in any medium or format, as long as you give appropriate credit to the original author(s) and the source, provide a link to the Creative Commons licence, and indicate if changes were made. The images or other third party material in this article are included in the article's Creative Commons licence, unless indicated

otherwise in a credit line to the material. If material is not included in the article's Creative Commons licence and your intended use is not permitted by statutory regulation or exceeds the permitted use, you will need to obtain permission directly from the copyright holder. To view a copy of this licence, visit <http://creativecommons.org/licenses/by/4.0/>.

References

- Bakker M, Maas K, Von Asmuth JR (2008) Calibration of transient groundwater models using time series analysis and moment matching. *Water Resour Res* 44(4):W04420
- Bakker M, Schaars F (2019) Solving groundwater flow problems with time series analysis: you may not even need another model. *Groundwater* 57(6):826–833
- Barton N, Quadros E (2019) Understanding the need for pre-injection from permeability measurements: what is the connection? *Journal of Rock Mechanics and Geotechnical Engineering* 11(3):576–597
- Bjerrum L (1967) "Engineering geology of Norwegian normally consolidated marine clays as related to settlements of buildings". 7th Rankine lecture. *Géotechnique* 17:81–118
- Boström L, Lindblom A (2021) evaluating transfer-function models to understand groundwater level impacts. Master's thesis. Chalmers University of Technology. Department of Architecture and Civil Engineering. Gothenburg, Sweden
- Box GEP, Jenkins GM (1970) Time series analysis, forecasting and control. Holden-Day, San Francisco, California
- Collenteur RA, Bakker M, Caljé R, Klop SA, Schaars F (2019) Pastas: open source software for the analysis of groundwater time series. *Groundwater* 57(6):877–885
- Collenteur R, Bakker M, Klammler G, Birk S (2021) Estimating groundwater recharge from groundwater levels using non-linear transfer function noise models and comparison to lysimeter data. *Hydrol Earth Syst Sci* 25(5):2931–2949

- Garshol KF, Tam JKW, Mui SWB, Chau HKM, Lau KCK (2012) Grouting techniques for deep subsea sewage tunnels in Hong Kong. In: *World Tunnel Congress 2012*. Bangkok: Thailand
- Gustafson G, Stille H (1996) Prediction of groutability from grout properties and hydrogeological data. *Tunn Undergr Space Technol* 11(3):325–332
- Hipel KW, McLeod AI (1994) Time series modelling of water resources and environmental systems. Elsevier, Amsterdam
- Karlsruud K (2002) Control of water leakage when tunnelling under urban areas in the Oslo region. *Water Control in Norwegian Tunnelling*, Publication No. 12. Norwegian Tunnelling Soc 27–33
- Langford J, Holmøy KH, Hansen TF, Holter KG, Stein E (2022) Analysis of water ingress, grouting effort, and pore pressure reduction caused by hard rock tunnels in the Oslo region. *Tunn Undergr Space Technol* 130:104762
- Lopez-Fernandez C, Prieto AD, Fernandez-Viejo G, Pando L, Fernandez EC (2012) Surface subsidence induced by groundwater drainage tunneling in granite residual soils (Burata Railway Tunnel, Spain). *J Geotech Geoenviron Eng* 139(5):821–824
- Myrabø S, Moss-Iversen E (2014) The Romeriksporten tunnel. Settlements as a result of tunnel construction and current status.” Norwegian Tunnelling Society. In *Proc 2014 Fjellsprengningskonferansen 20.1–20.10*. Oslo, Norway
- Obergfell C, Bakker M, Maas K (2019) Identification and explanation of a change in the groundwater regime using time series analysis. *Groundwater* 57(6):886–894
- Obergfell C (2019) Time-series analysis to estimate aquifer parameters, recharge, and changes in the groundwater regime. Doctoral Thesis. Delft University of Technology. Delft, The Netherlands
- Olofsson B (1994) Flow of groundwater from soil to crystalline rock. *Applied Hydrogeology* 2(3):71–83
- Penman HL (1948) Natural evaporation from open water, bare soil and grass. In *Proceedings of the Royal Society of London. Ser A Math Phys Sci* 193(1032):120–146
- Persson L (1998) Engineering geology of Stockholm, Sweden. *Bull Eng Geol Env* 57:79–90
- Peterson TJ, Western AW (2014) Nonlinear time-series modelling of unconfined groundwater head. *Water Resour Res* 50:8330–8355
- Shapoori V, Peterson TJ, Western AW, Costelloe JF (2015) Top-down groundwater hydrograph time-series modelling for climate-pumping decomposition. *Hydrogeol J* 23:819–836
- Shen SL, Wu HN, Cui YJ, Yin ZY (2014) Long-term settlement behaviour of metro tunnels in the soft deposits of Shanghai. *Tunn Undergr Space Technol* 40:309–323
- Virtanen P, Gommers R, Oliphant TE, Haberland M, Reddy T, Cournapeau D, Van Mulbregt P et al (2020). *SciPy 1.0 Contributors, SciPy 1.0: fundamental algorithms for scientific computing in Python*. *Nat Meth* 17(3):261–272
- Von Asmuth JR, Bierkens MFP, Maas K (2002) Transfer function noise modelling in continuous time using predefined impulse response functions. *Water Resour Res* 38(12):1287–1299
- Von Asmuth JR, Maas K, Bakker M, Petersen J (2008) Modelling time series of groundwater head subjected to multiple stresses. *Ground Water* 46(1):30–40
- Von Asmuth JR (2012) Groundwater system identification through time series analysis. PhD Thesis. Delft University of Technology. Delft, The Netherlands
- Yoo C, Lee Y, Kim S-H, Kim H-K (2012) Tunnelling-induced ground settlements in a groundwater drawdown environment – a case history. *Tunn Undergr Space Technol* 29:69–77